



FREE STANDING  
MODULAR ENCLOSURES

# FREE STANDING MODULAR ENCLOSURES



- Modular Free Standing Enclosures
- Cabinets with Mounting Plate
- Counter Panels
- Distribution Panels
- Compensation Panels

### Fields of Use

- Indoor Industrial Areas
- Floor Distribution
- Energy Systems
- Engine Control
- Machine
- Control Unit
- Compensation
- Transformer
- Lighting
- Worksite
- Counter Panels

Designed for many other fields of use.



### Technical Specifications

- Reference Code: **750420**
- Protection Level : IP42, IP54
- Construction : **%100** Modular
- Body Main Frame : 2mm galvanized steel
- Front and Rear Doors : 2mm galvanized steel
- Front and Rear Doors : 150° opening angle
- Side Panels : 1,2mm galvanized steel
- Mounting Plate : 2mm galvanized steel
- Body Corner Joints : 4mm zinc coated steel
- Curtain Plate : 1mm galvanized steel
- Plinth : 2mm galvanized steel-RAL7035 Light Grey Coated
- Coating : RAL 7035 electrostatic powder coating

- Quality Standard : **TS-EN 62208**
- Sealing System : Polyurethane Casting Seal
- Cable Entry : PG Gland, Brush, Cable Entry Panels
- Hinge : 3 points hidden hinge mechanism
- Front and Rear Lock : 3 points locking mechanism
- Door Support : Corner support profiles to increase strength
- Depth Slide : Corner support for mounting plates and connection equipment
- Assembly Equipment : Screws and Nuts

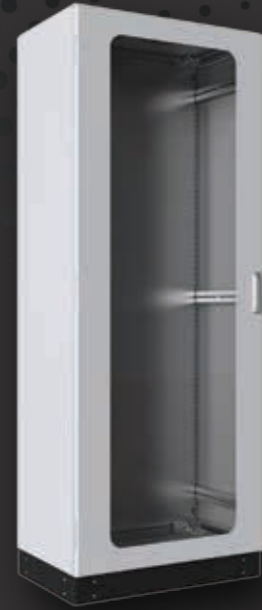
## FREE STANDING MODULAR ENCLOSURES

### Door Options



Flat Metal Door

Code Extension : DMK



Glass Door

Code Extension : CK



Vertically Split Double Doors

Code Extension : DBK



Horizontally Split Double Doors

Code Extension : YBK

Please specify the code extension of the preferred door type at the end of the product code.



Slotted, Filtered Metal Door

Code Extension : SMK



Louvered, Metal Filtered Metal Door

Code Extension : PMK



Filtered Door

Code Extension : FK



Horizontally Split Double Doors

Code Extension : OBK

Please specify the code extension of the preferred door type at the end of the product code.

### W=400mm Modular Free Standing Enclosures Product Codes

Product Code	W=Width	D=Depth	H=Height
0440140	400 mm	400 mm	1400 mm
0450140	400 mm	500 mm	1400 mm
0460140	400 mm	600 mm	1400 mm
0480140	400 mm	800 mm	1400 mm
0440160	400 mm	400 mm	1600 mm
0450160	400 mm	500 mm	1600 mm
0460160	400 mm	600 mm	1600 mm
0480160	400 mm	800 mm	1600 mm
0440180	400 mm	400 mm	1800 mm
0450180	400 mm	500 mm	1800 mm
0460180	400 mm	600 mm	1800 mm
0480180	400 mm	800 mm	1800 mm
0440200	400 mm	400 mm	2000 mm
0450200	400 mm	500 mm	2000 mm
0460200	400 mm	600 mm	2000 mm
0480200	400 mm	800 mm	2000 mm

### W=600mm Modular Free Standing Enclosures Product Codes

Product Code	W=Width	D=Depth	H=Height
0640140	600 mm	400 mm	1400 mm
0650140	600 mm	500 mm	1400 mm
0660140	600 mm	600 mm	1400 mm
0680140	600 mm	800 mm	1400 mm
0640160	600 mm	400 mm	1600 mm
0650160	600 mm	500 mm	1600 mm
0660160	600 mm	600 mm	1600 mm
0680160	600 mm	800 mm	1600 mm
0640180	600 mm	400 mm	1800 mm
0650180	600 mm	500 mm	1800 mm
0660180	600 mm	600 mm	1800 mm
0680180	600 mm	800 mm	1800 mm
0640200	600 mm	400 mm	2000 mm
0650200	600 mm	500 mm	2000 mm
0660200	600 mm	600 mm	2000 mm
0680200	600 mm	800 mm	2000 mm

### W=800mm Modular Free Standing Enclosures Product Codes

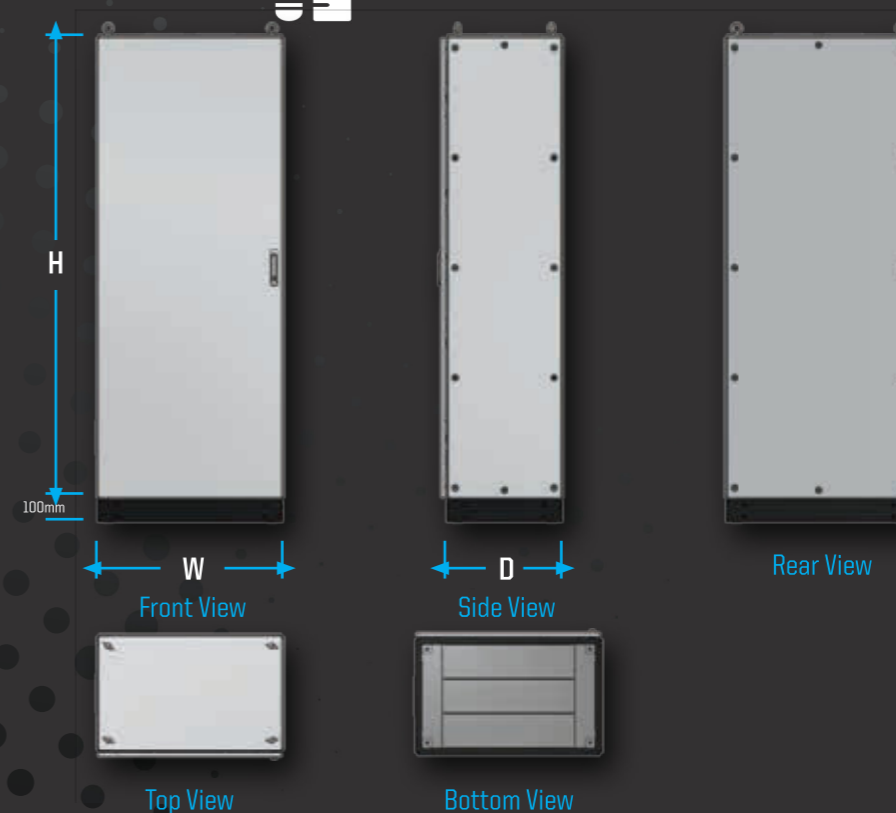
Product Code	W=Width	D=Depth	H=Height
0840140	800 mm	400 mm	1400 mm
0850140	800 mm	500 mm	1400 mm
0860140	800 mm	600 mm	1400 mm
0880140	800 mm	800 mm	1400 mm
0840160	800 mm	400 mm	1600 mm
0850160	800 mm	500 mm	1600 mm
0860160	800 mm	600 mm	1600 mm
0880160	800 mm	800 mm	1600 mm
0840180	800 mm	400 mm	1800 mm
0850180	800 mm	500 mm	1800 mm
0860180	800 mm	600 mm	1800 mm
0880180	800 mm	800 mm	1800 mm
0840200	800 mm	400 mm	2000 mm
0850200	800 mm	500 mm	2000 mm
0860200	800 mm	600 mm	2000 mm
0880200	800 mm	800 mm	2000 mm

### W=1000mm Modular Free Standing Enclosures Product Codes

Product Code	W=Width	D=Depth	H=Height
1040140	1000 mm	400 mm	1400 mm
1050140	1000 mm	500 mm	1400 mm
1060140	1000 mm	600 mm	1400 mm
1080140	1000 mm	800 mm	1400 mm
1040160	1000 mm	400 mm	1600 mm
1050160	1000 mm	500 mm	1600 mm
1060160	1000 mm	600 mm	1600 mm
1080160	1000 mm	800 mm	1600 mm
1040180	1000 mm	400 mm	1800 mm
1050180	1000 mm	500 mm	1800 mm
1060180	1000 mm	600 mm	1800 mm
1080180	1000 mm	800 mm	1800 mm
1040200	1000 mm	400 mm	2000 mm
1050200	1000 mm	500 mm	2000 mm
1060200	1000 mm	600 mm	2000 mm
1080200	1000 mm	800 mm	2000 mm

Extra 100mm plinth is included in all heights.

### Technical Drawing



## FREE STANDING MODULAR ENCLOSURES



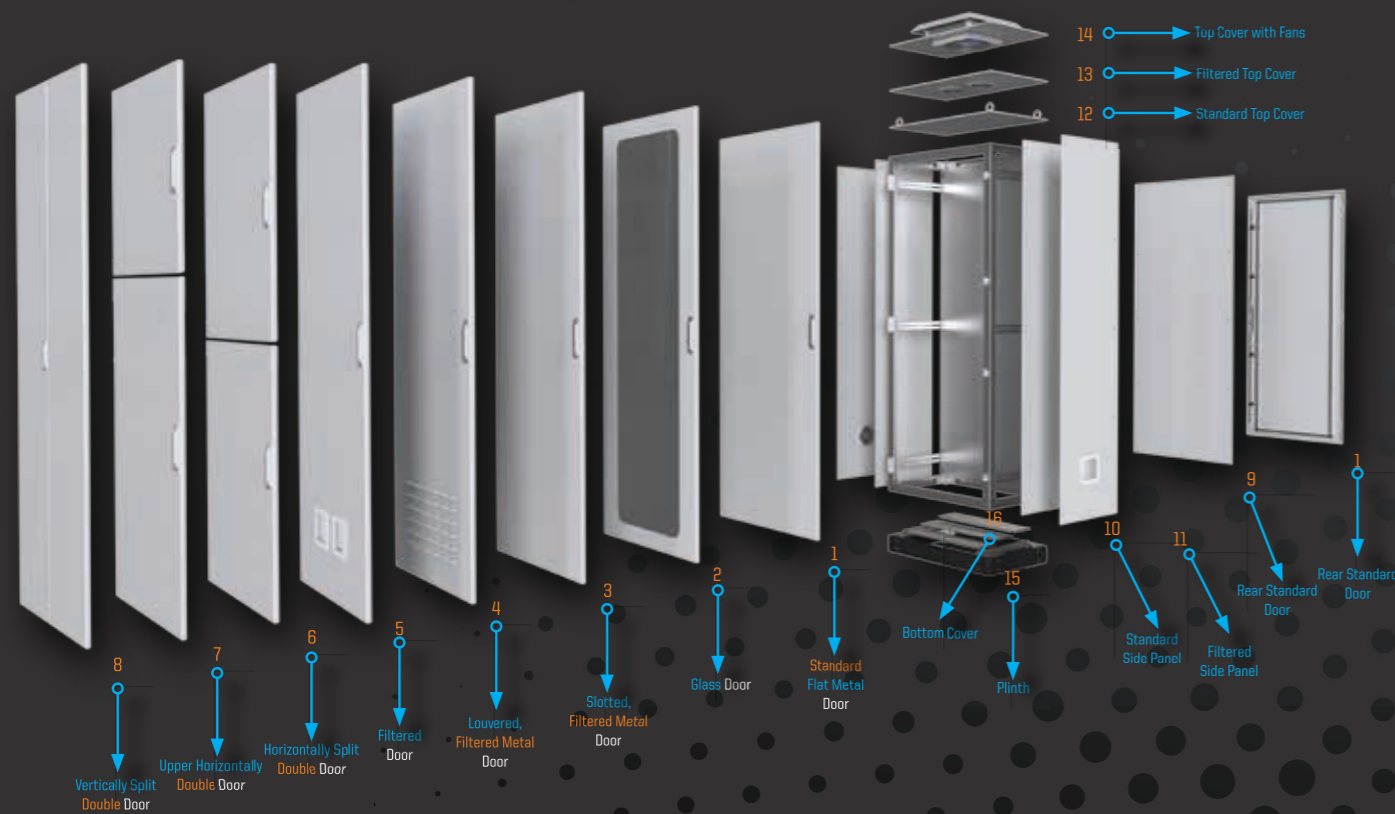
### Standard Configuration

- Vertical Profiles 4 pcs
- Horizontal Profiles 4 pcs
- Flat Metal Front Door 1 pcs
- Flat Metal Rear Door 1 pcs
- Side Panel 2 pcs
- Plinth Module 1 set
- Corner Joint Set 8 pcs
- Divided Bottom Cover 1 set
- Mounting Plate 1 pcs
- Flat Top Cover 1 pcs
- Handle Lock 1 pcs

### Cable Management



### General Configuration



#### Separable Cable Entries

Separable cable entry for socket cables. Protection level IP66 (EN 60529 certified). Opening dimensions are the same with the cable sizes.

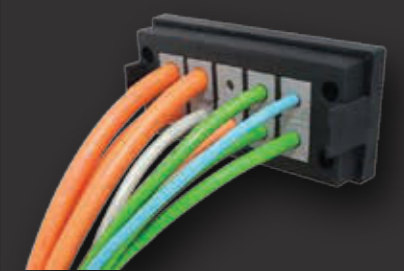
**KEL-ER24**



#### Mass Cabling Cable Entries

Cable entry for cables without sockets. Mass Cabling. Protection level IP66. Different dimensions are available.

**KEL-DPZ24**



#### Snap Locking Cable Entries

Assembly frame that can be locked on the cable entry frames fast and easily.

**KEL-SNAP 24**



#### Round Cable Entries

Compact, round cable entry for the cables without sockets. Mass cabling. Protection up to IP68. Available for M32 to M63.

**KEL-DPZ**



#### Tension Reduction Plate

Tension reduction plate to fix the cables. Mounted on 35mm automat rails.

**SFZL**

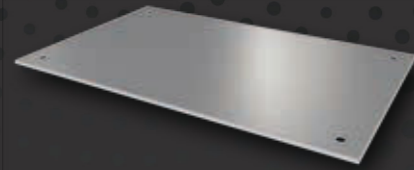


#### Brushed Entry

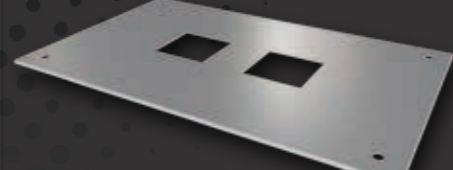
Used for cable entries in network cabinets and other enclosures. Ideal solution for two ways cable passages.

**KEL-BES 24**

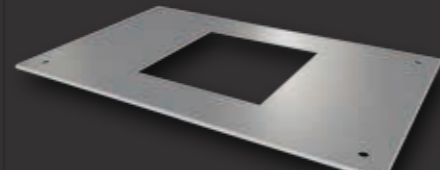
## FREE STANDING MODULAR ENCLOSURES



Standard Flat Top Cover



Optional Filtered Top Cover



Optional with Fans Top Cover



Standard Mounting Plate



Optional Filtered Side Panel



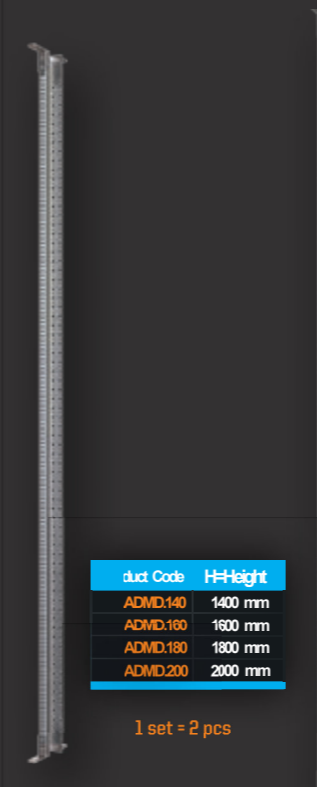
Standard Side Panel



Standard Divided Bottom Cover



### Adjustable Vertical Rails



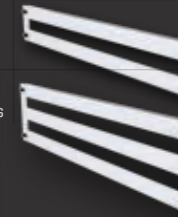
duct Code	H=Height
ADMD.140	1400 mm
ADMD.160	1600 mm
ADMD.180	1800 mm
ADMD.200	2000 mm

1 set = 2 pcs



### Enclosures Curtain Plate with Opening

Single Line



Double Lines



Product Code	W=Width	H=Height
BPP415-1	400 mm	150 mm
BPP615-1	600 mm	150 mm
BPP815-1	800 mm	150 mm
BPP1015-1	1000 mm	150 mm
BPP430-1	400 mm	300 mm
BPP630-1	600 mm	300 mm
BPP830-1	800 mm	300 mm
BPP1030-1	1000 mm	300 mm

Product Code	W=Width	H=Height
BPP445-2	400 mm	450 mm
BPP645-2	600 mm	450 mm
BPP845-2	800 mm	450 mm
BPP1045-2	1000 mm	450 mm
BPP460-2	400 mm	600 mm
BPP660-2	600 mm	600 mm
BPP860-2	800 mm	600 mm
BPP1060-2	1000 mm	600 mm

### Fixed Vertical Rails

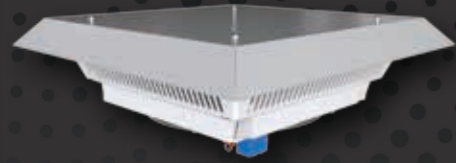


Product Code	W=Width	H=Height
SDMD.414	400mm	1400mm
SDMD.614	600mm	1400mm
SDMD.814	800mm	1400mm
SDMD.1014	1000mm	1400mm
SDMD.416	400mm	1600mm
SDMD.616	600mm	1600mm
SDMD.816	800mm	1600mm
SDMD.1016	1000mm	1600mm
SDMD.418	400mm	1800mm
SDMD.618	600mm	1800mm
SDMD.818	800mm	1800mm
SDMD.1018	1000mm	1800mm
SDMD.420	400mm	2000mm
SDMD.620	600mm	2000mm
SDMD.820	800mm	2000mm
SDMD.1020	1000mm	2000mm

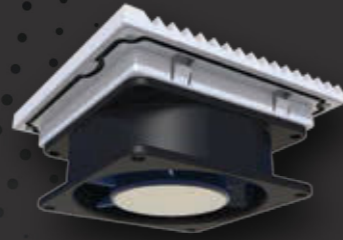
### Enclosures Curtain Plate

Product Code	W=Width	H=Height
KPP415	400mm	150mm
KPP615	600mm	150mm
KPP815	800mm	150mm
KPP1015	1000mm	150mm
KPP420	400mm	200mm
KPP620	600mm	200mm
KPP820	800mm	200mm
KPP1020	1000mm	200mm
KPP425	400mm	250mm
KPP625	600mm	250mm
KPP825	800mm	250mm
KPP1025	1000mm	250mm
KPP430	400mm	300mm
KPP630	600mm	300mm
KPP830	800mm	300mm
KPP1030	1000mm	300mm

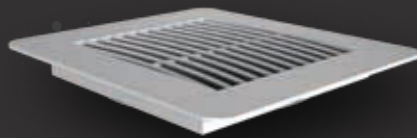
## FREE STANDING MODULAR ENCLOSURES



IP54 Top Fan  
FAN1FT\_TP



120x120 Filtered Fan  
FAN1FT  
FAN2FT



120x120 Fan Filter  
PLS120X120



Project Shelf  
A4PC



2U DIN Rail Panel  
2UDRP



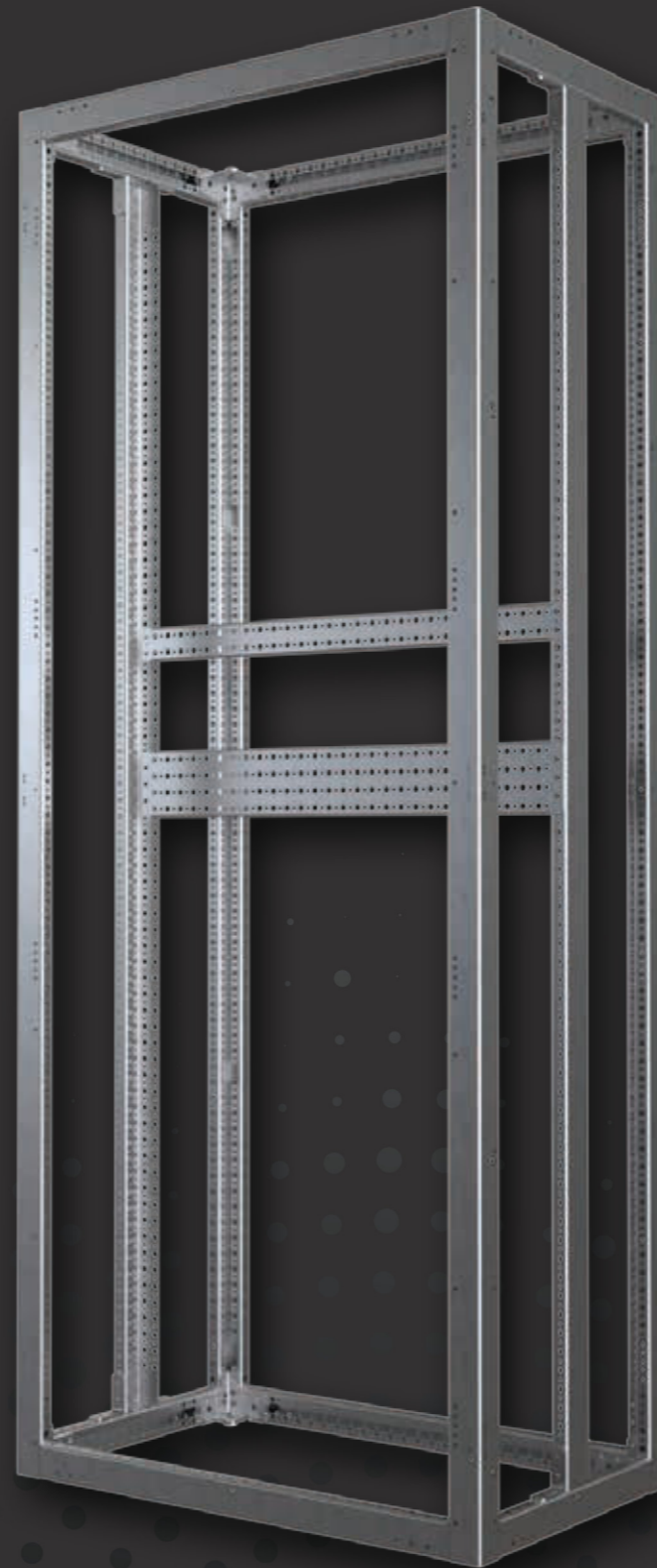
Lighting  
AYO  
AYM

Fixed Shelf

Product Code	W=Width	D=Depth
RAF4040	400 mm	400 mm
RAF5040	500 mm	400 mm
RAF6040	600 mm	400 mm
RAF8040	800 mm	400 mm
RAF10040	1000 mm	400 mm
RAF4050	400 mm	500 mm
RAF5050	500 mm	500 mm
RAF6050	600 mm	500 mm
RAF8050	800 mm	500 mm
RAF10050	1000 mm	500 mm
RAF4060	400 mm	600 mm
RAF5060	500 mm	600 mm
RAF6060	600 mm	600 mm
RAF8060	800 mm	600 mm
RAF10060	1000 mm	600 mm
RAF4080	400 mm	800 mm
RAF5080	500 mm	800 mm
RAF6080	600 mm	800 mm
RAF8080	800 mm	800 mm
RAF10080	1000 mm	800 mm



Fixed Shelf



Horizontal Mounting Bases Product Codes

Product Code	W=Width	H=Height
YMK405	400 mm	50 mm
YMK505	500 mm	50 mm
YMK605	600 mm	50 mm
YMK805	800 mm	50 mm
YMK1005	1000 mm	50 mm
YMK4010	400 mm	100 mm
YMK5010	500 mm	100 mm
YMK6010	600 mm	100 mm
YMK8010	800 mm	100 mm
YMK10010	1000 mm	100 mm



DIN Rails Product Codes

Product Code	W=Width	H=Height
30 DINRAIL12N	300 mm	75 mm
40 DINRAIL12N	400 mm	75 mm
50 DINRAIL12N	500 mm	75 mm
60 DINRAIL12N	600 mm	75 mm
80 DINRAIL12N	800 mm	75 mm
30 DINRAIL22N	300 mm	15 mm
40 DINRAIL22N	400 mm	15 mm
50 DINRAIL22N	500 mm	15 mm
60 DINRAIL22N	600 mm	15 mm
80 DINRAIL22N	800 mm	15 mm
30 DINRAIL32N	300 mm	50 mm
40 DINRAIL32N	400 mm	50 mm
50 DINRAIL32N	500 mm	50 mm
60 DINRAIL32N	600 mm	50 mm
80 DINRAIL32N	800 mm	50 mm



H=50 H=15 H=7.5



Modular Plinth

Plinth Product Codes

Product Code	W=Width	D=Depth	H=Height
BZ404010	400 mm	400 mm	100 mm
BZ504010	500 mm	400 mm	100 mm
BZ604010	600 mm	400 mm	100 mm
BZ804010	800 mm	400 mm	100 mm
BZ1004010	1000 mm	400 mm	100 mm
BZ405010	400 mm	500 mm	100 mm
BZ505010	500 mm	500 mm	100 mm
BZ605010	600 mm	500 mm	100 mm
BZ805010	800 mm	500 mm	100 mm
BZ1005010	1000 mm	500 mm	100 mm
BZ406010	400 mm	600 mm	100 mm
BZ506010	500 mm	600 mm	100 mm
BZ606010	600 mm	600 mm	100 mm
BZ806010	800 mm	600 mm	100 mm
BZ1006010	1000 mm	600 mm	100 mm
BZ408010	400 mm	800 mm	100 mm
BZ508010	500 mm	800 mm	100 mm
BZ608010	600 mm	800 mm	100 mm
BZ808010	800 mm	800 mm	100 mm
BZ1008010	1000 mm	800 mm	100 mm